

National Assessment and Accreditation Council (NAAC)

Student Satisfaction Survey

Fateh Chand College For Women, Hisar

- A. Age:
- B. What degree program are you pursuing now?
 - a) Bachelor's b) Master's
- C. What subject area are you currently pursuing?
 - a) Arts b) Commerce c) Science

Instructions to fill the questionnaire

- All questions should be compulsorily attempted.
- Each question has five responses, choose the most appropriate one.
- The response to the qualitative question no. 21 is student's opportunity to give suggestions or improvements; she/he can also mention weaknesses of the institute here. (Kindly restrict your response to teaching learning process only)

Criterion II – Teaching–Learning and Evaluation

Student Satisfaction Survey on Teaching Learning Process

Following are questions for online student satisfaction survey regarding teaching learning process.

1. How much of the syllabus was covered in the class?
 - 4 – 85 to 100%
 - 3 – 70 to 84%
 - 2 – 55 to 69%
 - 1– 30 to 54%
 - 0 –Below 30%

2. How well did the teachers prepare for the classes?
 - 4 –Thoroughly
 - 3 – Satisfactorily
 - 2 – Poorly
 - 1 – Indifferently
 - 0 – Won't teach at all

3. How well were the teachers able to communicate?
 - 4 – Always effective
 - 3 – Sometimes effective
 - 2 – Just satisfactorily
 - 1– Generally ineffective
 - 0– Very poor communication

4. The teacher's approach to teaching can best be described as
 - 4– Excellent
 - 3 – Very good
 - 2 – Good
 - 1 – Fair
 - 0– Poor

5. Fairness of the internal evaluation process by the teachers.
 - 4 – Always fair
 - 3 – Usually fair
 - 2 – Sometimes unfair
 - 1 – Usually unfair
 - 0– Unfair

6. Was your performance in assignments discussed with you?
 - 4 – Every time
 - 3 – Usually
 - 2 – Occasionally/Sometimes
 - 1 – Rarely
 - 0– Never

7. The institute takes active interest in promoting internship, student exchange, field visit opportunities for students.
 - 4 – Regularly
 - 3 – Often
 - 2 – Sometimes
 - 1 – Rarely
 - 0– Never

8. The teaching and mentoring process in your institution facilitates you in cognitive, social and emotional growth.
 - 4 – Significantly
 - 3 – Very well
 - 2 – Moderately
 - 1 – Marginally
 - 0– Not at all

9. The institution provides multiple opportunities to learn and grow.
 - 4 – Strongly agree
 - 3 – Agree
 - 2 – Neutral
 - 1 – Disagree
 - 0– Strongly disagree

10. Teachers inform you about your expected competencies, course outcomes and programme outcomes.

- 4 – Every time
- 3 – Usually
- 2 – Occasionally/Sometimes
- 1 – Rarely
- 0 – Never

11. Your mentor does a necessary follow-up with an assigned task to you.

- 4 – Every time
- 3 – Usually
- 2 – Occasionally/Sometimes
- 1 – Rarely
- 0 – I don't have a mentor

12. The teachers illustrate the concepts through examples and applications.

- 4 – Every time
- 3 – Usually
- 2 – Occasionally/Sometimes
- 1 – Rarely
- 0 – Never

13. The teachers identify your strengths and encourage you with providing right level of challenges.

- 4 – Fully
- 3 – Reasonably
- 2 – Partially
- 1 – Slightly
- 0 – Unable to

14. Teachers are able to identify your weaknesses and help you to overcome them.

- 4 – Every time
- 3 – Usually
- 2 – Occasionally/Sometimes
- 1 – Rarely
- 0 – Never

15. The institution makes effort to engage students in the monitoring, review and continuous quality improvement of the teaching learning process.

- 4 – Strongly agree
- 3 – Agree
- 2 – Neutral
- 1 – Disagree
- 0 – Strongly disagree

16. The institute/ teachers use student centric methods, such as experiential learning, participative learning and problem solving methodologies for enhancing learning experiences.

- 4 – To a great extent
- 3 – Moderate
- 2 – Some what
- 1 – Very little
- 0 – Not at all

17. Teachers encourage you to participate in extracurricular activities.

- 4 – Strongly agree
- 3 – Agree
- 2 – Neutral
- 1 – Disagree
- 0 – Strongly disagree

18. Efforts are made by the institute/ teachers to inculcate soft skills, life skills and employability skills to make you ready for the world of work.

- 4 – To a great extent
- 3 – Moderate
- 2 – Some what
- 1 – Very little
- 0 – Not at all

19. What percentage of teachers use ICT tools such as LCD projector, Multimedia, etc. while teaching.

- 4 – Above 90%
- 3 – 80 – 89%
- 2 – 50 – 69%
- 1 – 30 – 49%
- 0 – Below 29%

20. The overall quality of teaching-learning process in your institute is very good.

4 –Strongly agree

3 – Agree

2 – Neutral

1 – Disagree

0 – Strongly disagree

21. Give three observation / suggestions to improve the overall teaching – learning experience in your institution.

a)

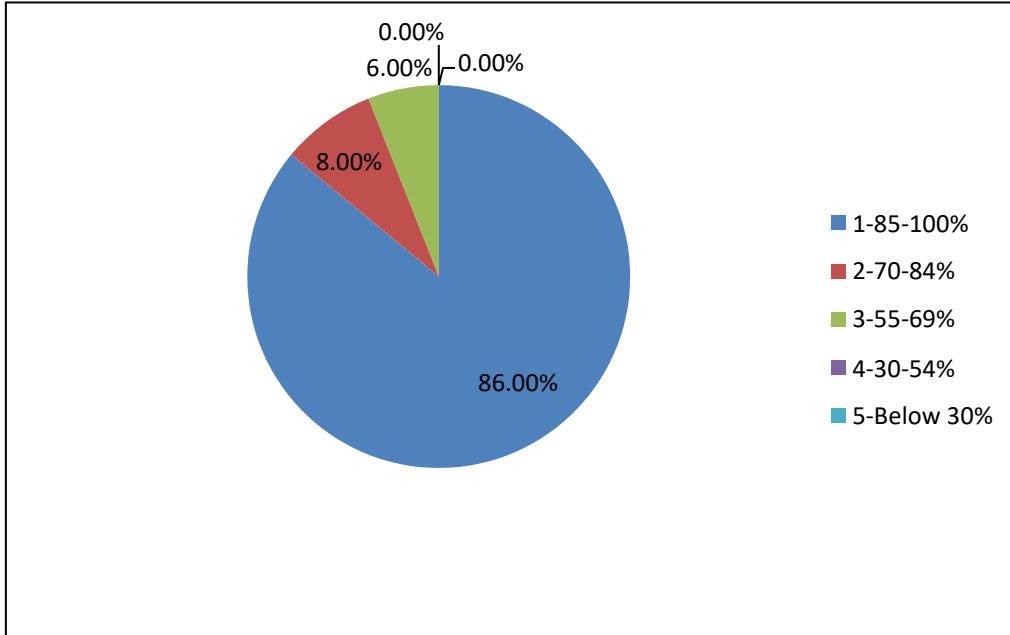
b)

c)

Student Satisfaction Survey on Teaching Learning Process

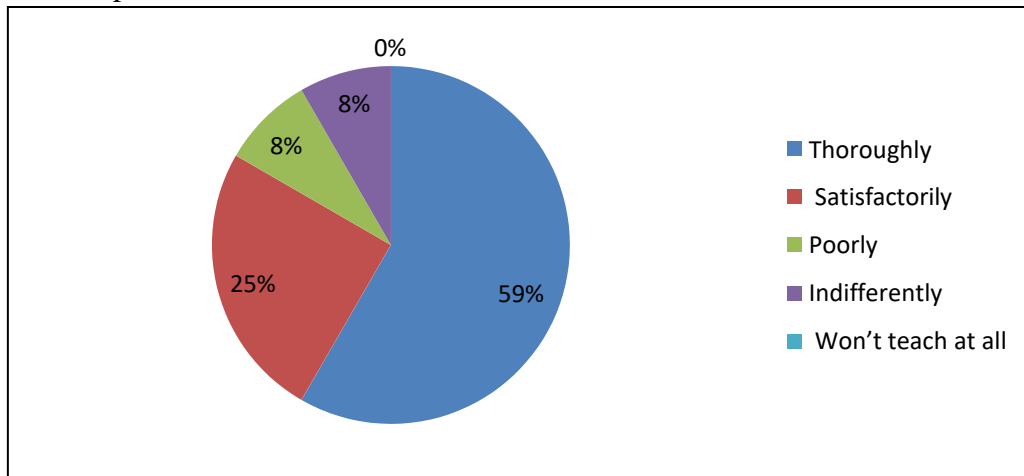
1. How much of the syllabus was covered in the class?

1102 responses



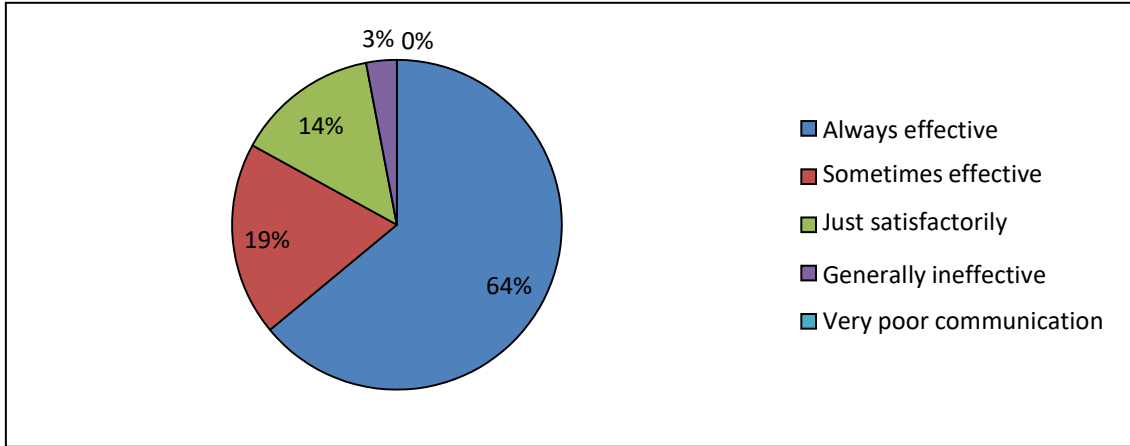
2. How well did the teachers prepare for the classes?

1102 responses



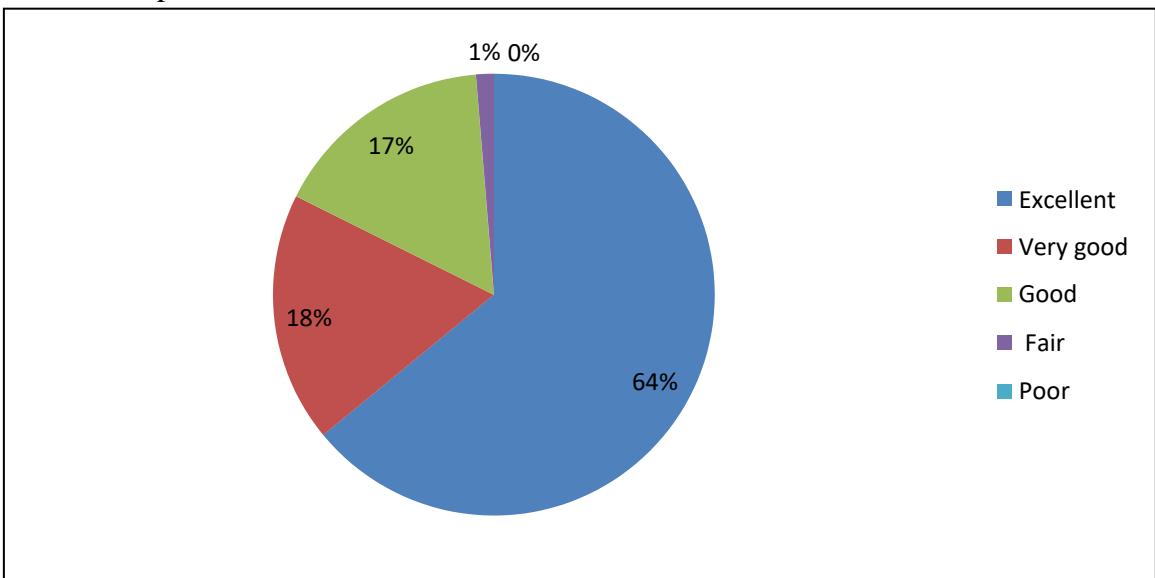
3. How well were the teachers able to communicate?

1102 responses



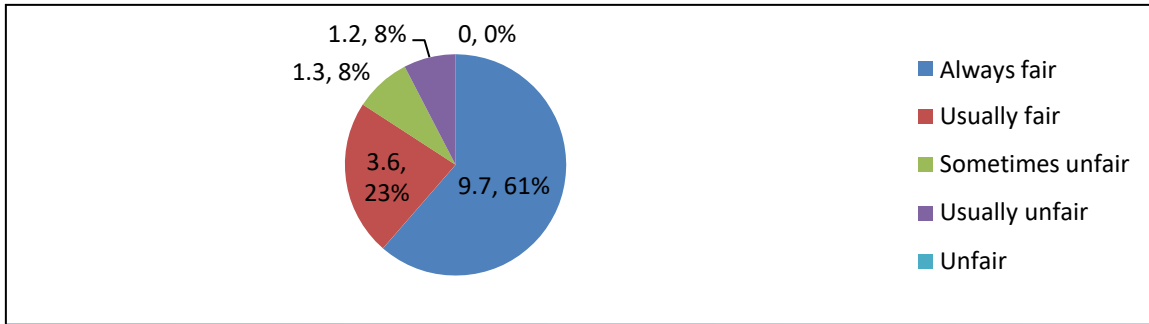
4. The teacher's approach to teaching can best be described as

1102 responses



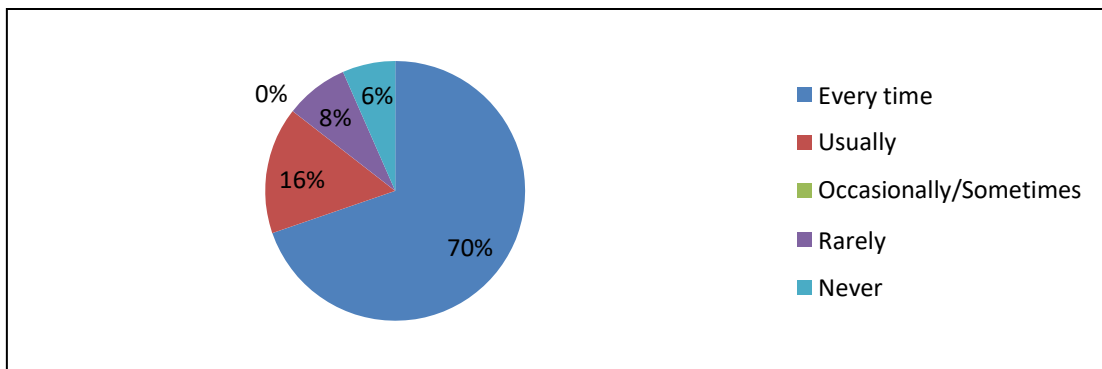
5. Fairness of the internal evaluation process by the teachers.

1102 responses



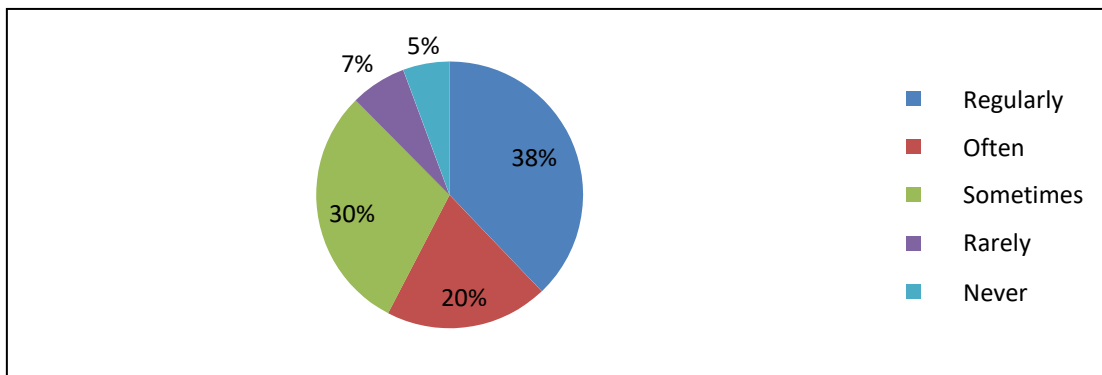
6. Was your performance in assignments discussed with you?

1102 responses



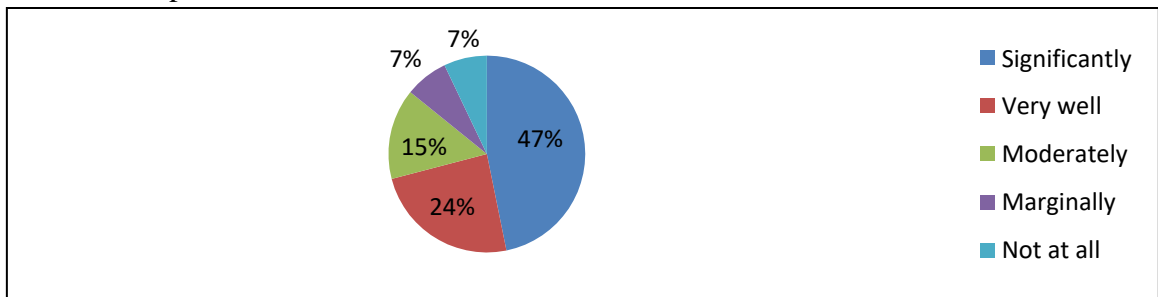
7. The institute takes active interest in promoting internship, student exchange, field visit opportunities for students.

1102 responses



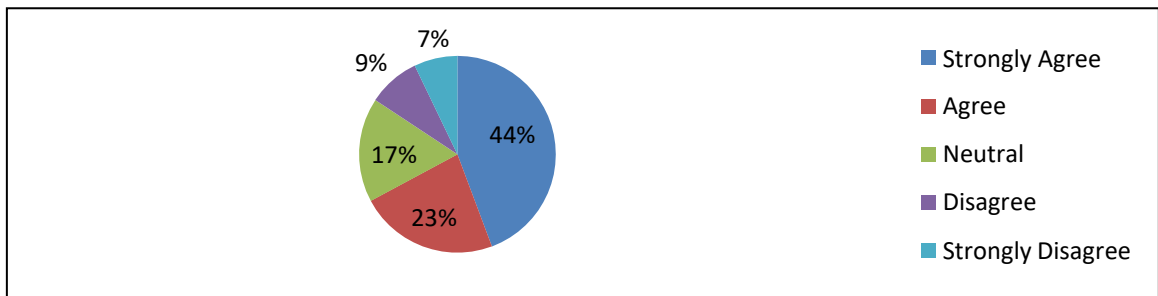
8. The teaching and mentoring process in your institution facilitates you in cognitive, social and emotional growth.

1102 responses



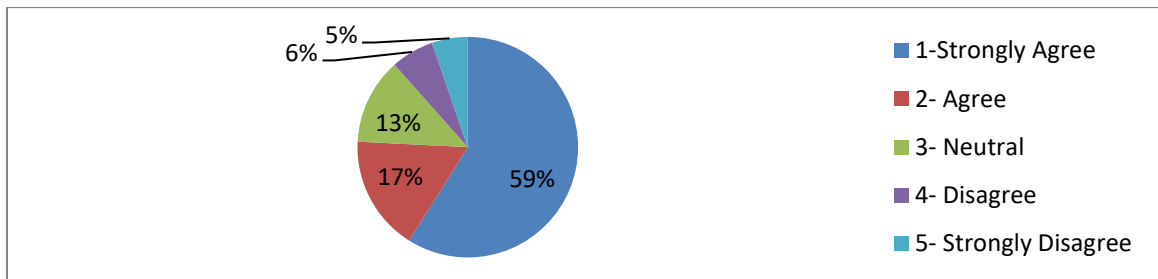
9. The institution provides multiple opportunities to learn and grow.

1102 responses

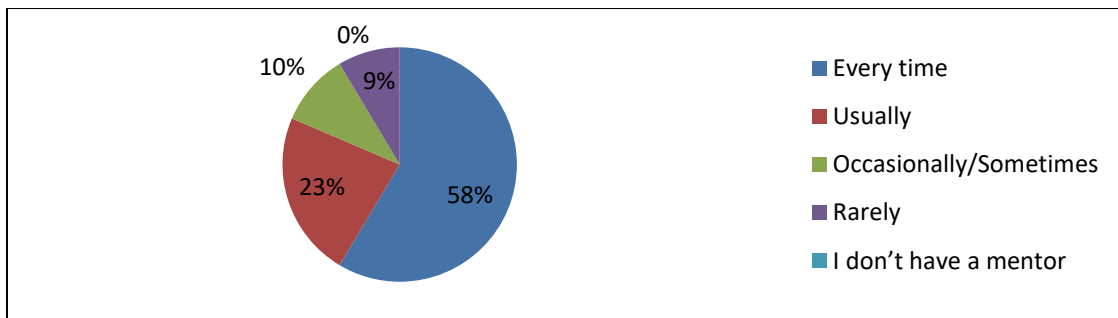


10. Teachers inform you about your expected competencies, course outcomes or programme outcomes.

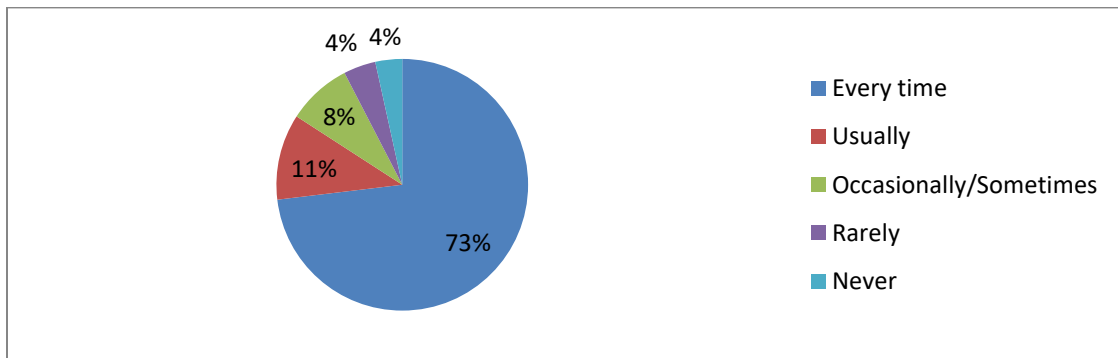
1062 responses



11. Your mentor does a necessary follow-up with an assigned task to you.
1062ponses

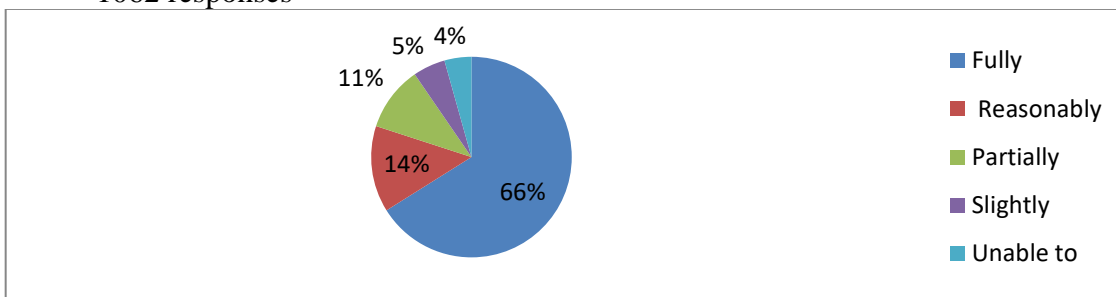


12. The teachers illustrate the concepts through examples and applications.
1062 responses



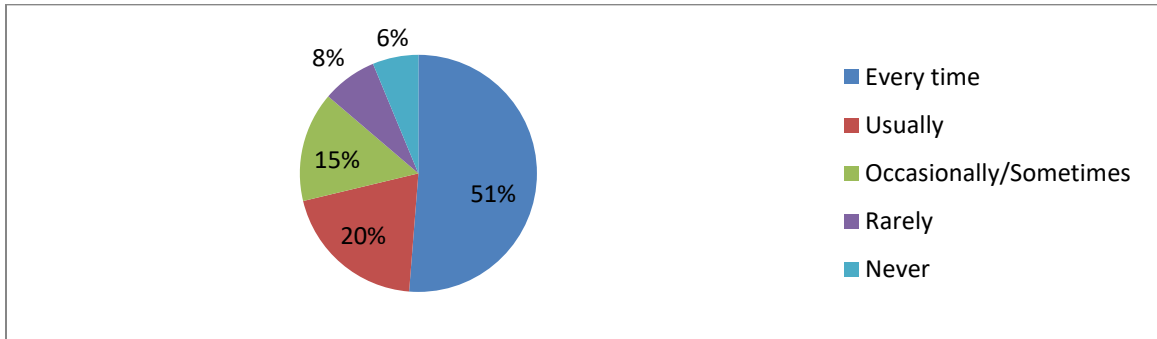
13. The teachers identify your strengths and encourage you with providing right level of challenges.

1062 responses



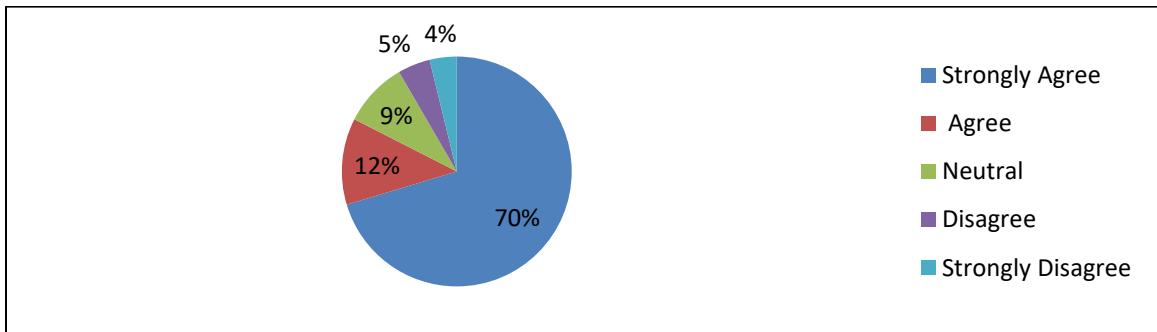
14. Teachers are able to identify your weaknesses and help you to overcome them.

1062 responses



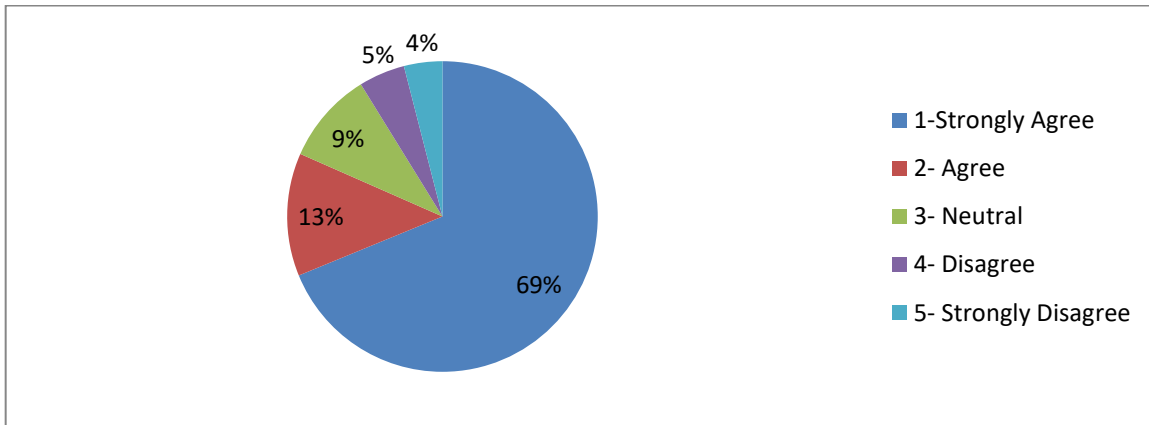
15. The institution makes effort to engage students in the monitoring, review and continuous quality improvement of the teaching learning process.

1062 responses



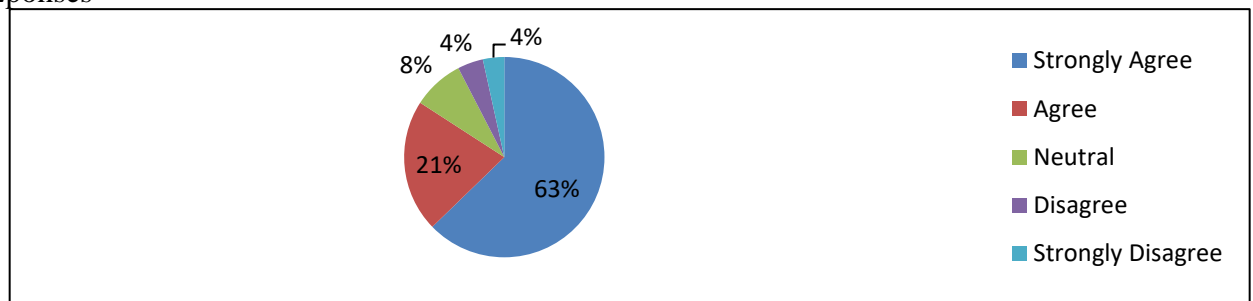
16. The institute/teachers use student centric methods, such as experiential learning, participative learning and problem solving methodologies for enhancing learning experiences.

1062 responses



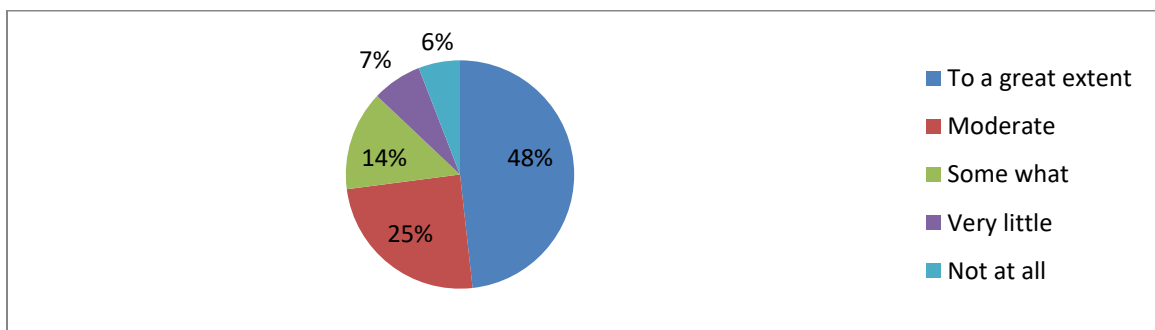
17. Teachers encourage you to participate in extracurricular activities.

1062 responses



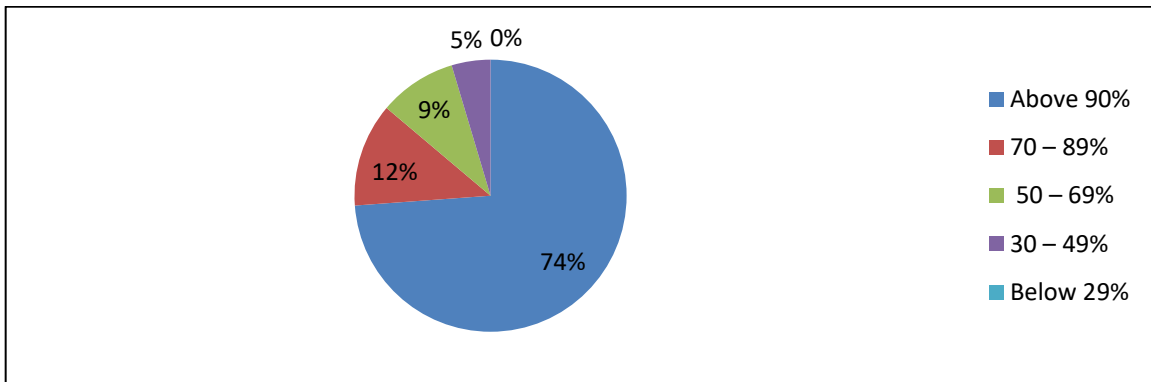
18. Efforts are made by the institute/ teachers to inculcate soft skills, life skills and employability skills to make you ready for the world of work.

1062 responses



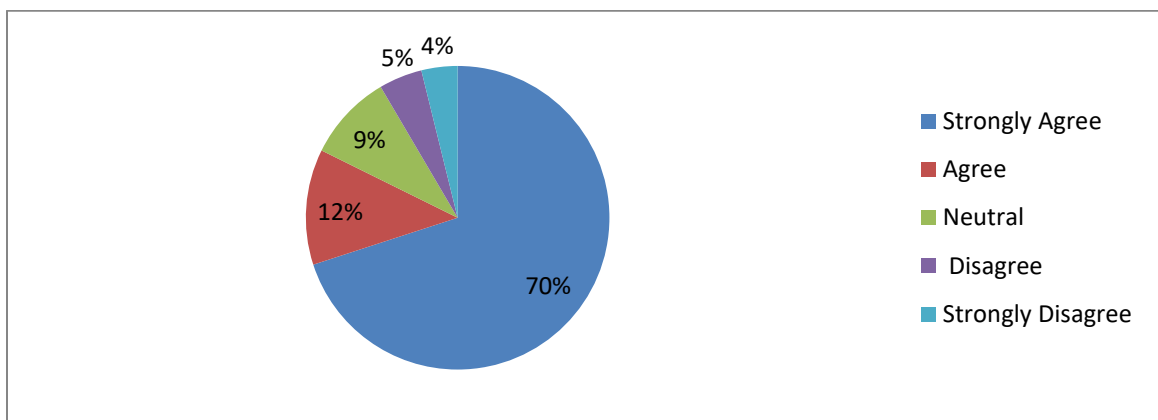
19. What percentage of teachers use ICT tools such as LCD projector, Multimedia, etc. while teaching.

1062 responses



20. The overall quality of teaching-learning process in your institute is very good.

1062 responses



Observations and Suggestions from open ended question:

1. Majority of students demanded more books in library regarding syllabus and competitive exam. The learning experience in our institution has been satisfactory.
2. Some students demanded workshop on stress management and competitive exam. To open more time for discussion and interactions.
3. Some students demanded Extra-Curricular activities, field projects/visit, Interaction with other colleges.
4. Majority of students demanded more sports based activities.
5. Some of the students demanded quiz competition regarding competitive exam. Conduct more debates, seminars and talk for the student.
6. Most of the students of Post Graduate Classes demanded availability of smart class, more books for Post Graduate classes to be available in the library, better room furnishing
7. Some of the students demanded program on E- learning.
8. Few students also demanded program on soft skill. Teachers should engage more in the students' learning process.